

# Discover the Accessibility Features of Smartphones!

A Wireless Education Workshop  
for Consumers with Disabilities



# Who We Are



**Ben Lippincott**  
Project Director  
Consumer and Industry Outreach  
Wireless RERC



**Kendra Cox**  
Manager  
Compliance and Outreach  
CATO, AT&T

# Wireless Rehabilitation Engineering Research Center

Our mission is to research, evaluate and develop innovative wireless technologies and products that **meet the needs, enhance independence, and improve the quality of life and community participation** of people with disabilities.



Shepherd Center



Georgia Institute  
of Technology



wireless  
**RERC** Rehabilitation  
Engineering  
Research  
Center



at&t

# AT&T's Corporate Accessibility Technology Office

The **Corporate Accessibility Technology Office (CATO)** leads AT&T's efforts to address the needs of persons with disabilities in the design and development of products and services across the enterprise. CATO partners with each business unit to advance AT&T's efforts to comply with all accessibility laws for all products, services, applications and networks affecting the business. Building on AT&T's legacy, CATO promotes technology that is accessible by all and fosters innovations which improve the lives of our customers.



# Why are we here?

- Collaboration between Wireless RERC and AT&T Foundation
- # 1 Goal - Help you use your devices more effectively!
- We want to help you:
  1. Understand which popular smartphone platforms and Operating Systems (OS) might best fit your needs
  2. Leverage built-in accessibility features in those OS's
  3. Experience the latest accessible consumer-based wireless technologies
  4. Alleviate issues with your own devices, or learn something new

# General Hardware Overview

Four device categories:

1. Smartphone
2. Phablet
3. Tablet
4. Quick Messaging Device (QMD)

# Apple's iOS 7 General Overview

- Controlled ecosystem of hardware, software and “cloud” services
  - iPhone, iPad, iPod
  - App Store, iTunes, iBooks, iPhoto, iCloud
- Transferable skills between devices
- Greatest number of apps

# Google's Android 4.4 (Kit Kat)

## General OS Overview

- Largest market share
- Open source
- Many “flavors” of OS affects uniform accessibility performance across OS versions
- Tight integration with Google services
  - Gmail, Google+, Hangouts, Drive
- Often less expensive than iOS devices
- “Widgets” provide custom functionality and shortcuts to apps
- Manufacturers overlay their own “skin”



# Accessibility Features

## Virtual Assistant

# Apple iOS

## Virtual Assistant

## Apple – Siri Overview

- Virtual Intelligent Assistant/Voice Control
- Siri allows you to:
  - Send email/messages
  - Place phone calls
  - Schedule meetings
  - Set reminders
  - Search and surf internet



# Apple – Using Siri with AssistiveTouch

Steps to access AssistiveTouch:

1. Settings
2. General
3. Accessibility
4. Turn on AssistiveTouch

Steps to access Siri with AssistiveTouch:

1. Select AssistiveTouch menu button
2. Select Siri

# Google's Android 4.4 (KitKat)

## Virtual Assistant

# Google Now & Ok Google

- Intelligent Virtual Assistant
- Accessed by:
  - Google Search Bar
  - Swiping Up on home screen inside any app

# Accessibility Features

## Screen Readers

# iOS - Apple

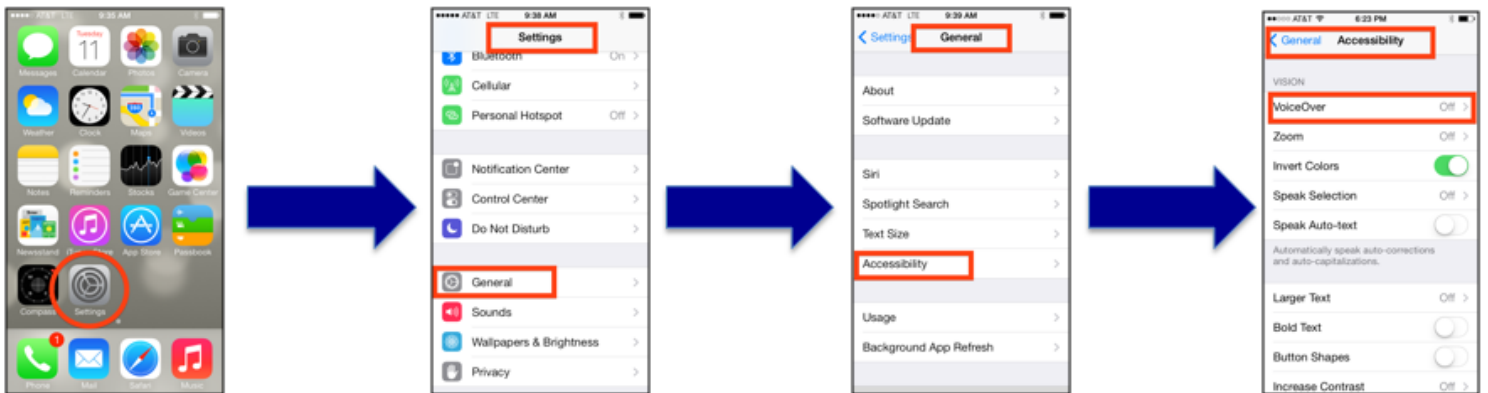
## Screen Reader



# Apple - VoiceOver

- Integrated gesture-based Screen Reader
- Gives speech output to all functions available on device
- When enabled, user needs to learn certain gestures to operate correctly
  - Examples: two and three finger swiping and double and triple tapping
- Triple-tap Home button: Out-of-box setup

# Access Apple VoiceOver



# Google's Android 4.4 (KitKat)

## Screen Reader

# Android - TalkBack

- Integrated gesture-based Screen Reader
- Gives speech output to most functions available on device
- When enabled, user needs to learn certain gestures to operate correctly
  - Examples: two and three finger swiping and double and triple tapping

# Access Android TalkBack



# Accessibility Features

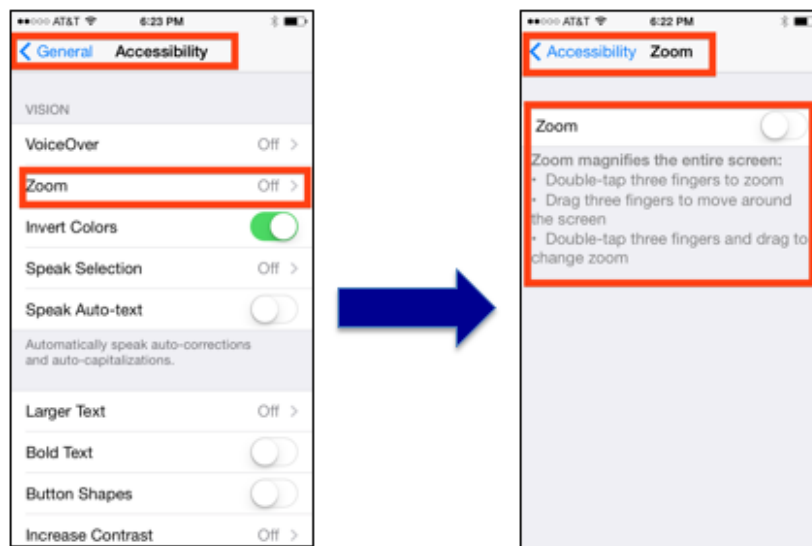
## Magnification, Text Size, Color

# Apple iOS

## Magnification, Text Size, Color

# Apple - Zoom

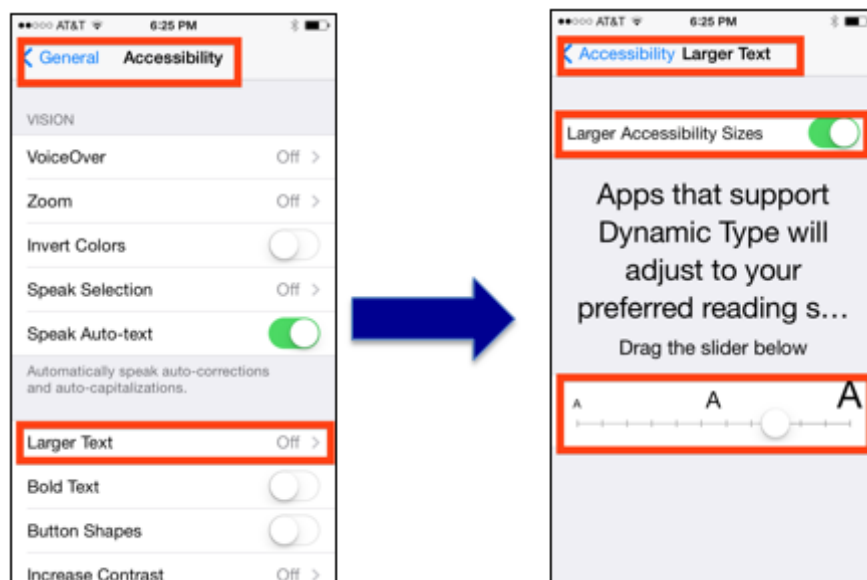
- Built-in screen magnifier
  - Specific gestures to enable/disable





# Apple - Larger Text

- Change the default size of text across entire device



# Apple - Invert Colors

- May make screen easier to read
  - Background of screen becomes black

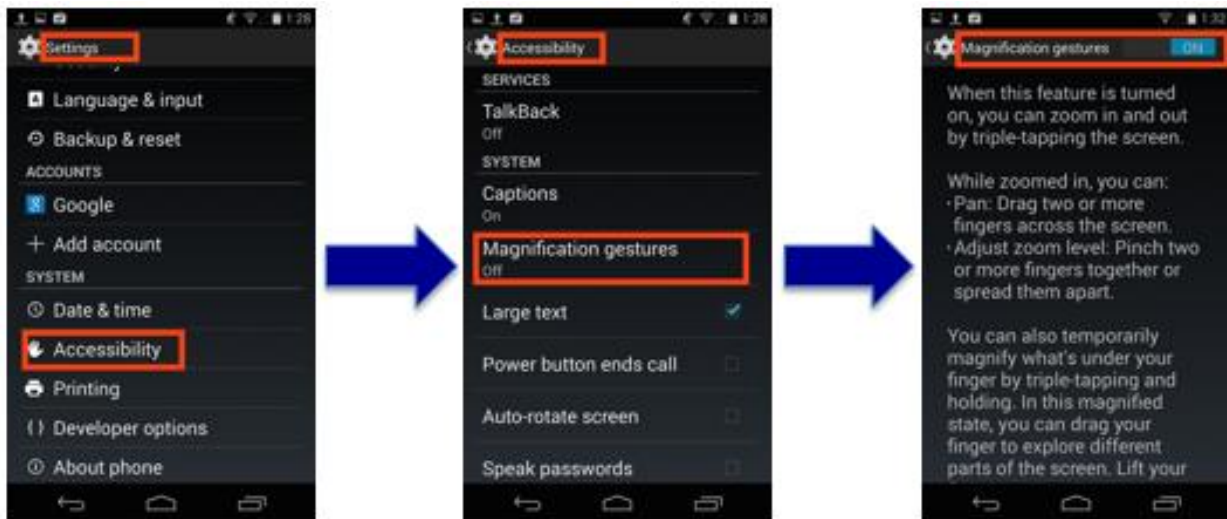


# Google's Android 4.4 (KitKat)

## Magnification, Text Size, Color

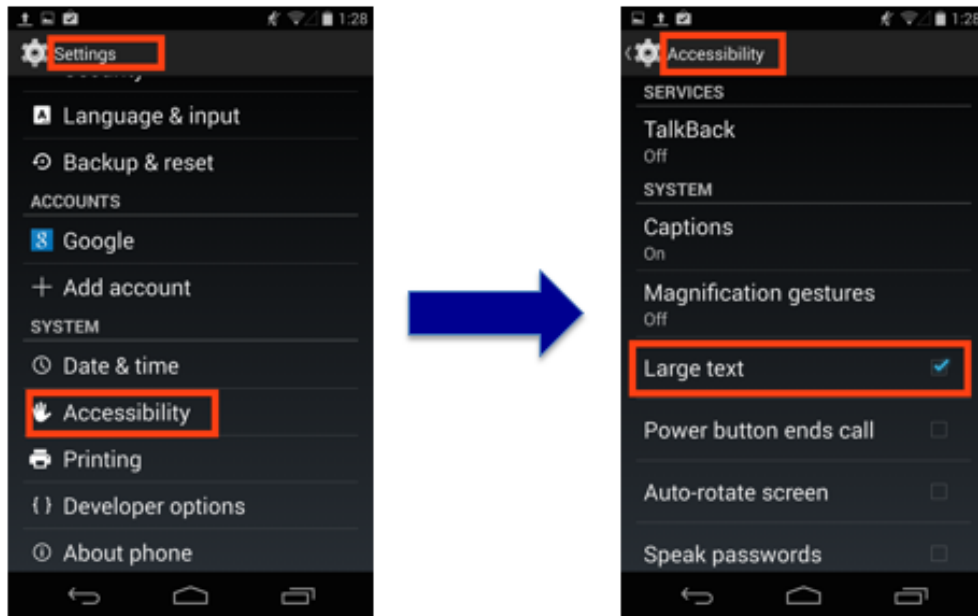
# Android - Magnification Gestures

- Built-in screen magnifier
  - Specific gestures to enable/disable



# Android - Large Text

- Changes font size to “Huge”



# Accessibility Features

## Vibrating and Visual Alerts

# iOS - Apple

## Vibrating and Visual Alerts

# Apple - Vibrating on Ring

Steps to enable Vibrate on Ring:

1. Settings
2. Sounds
3. Turn on Vibrate on Ring



# Apple - LED Flashing for Alerts

Steps to enable and disable LED Flashing:

1. Settings
2. General
3. Accessibility
4. LED Flash for Alerts

# Android 4.4 (KitKat) – Google

## Vibrating and Visual Alerts

# Android - Vibrate when Ringing

Steps to enable Vibrate on Ring:

1. Settings
2. Sound
3. Vibrate when ringing

# Android - LED Flash

Steps to enable LED Flash:

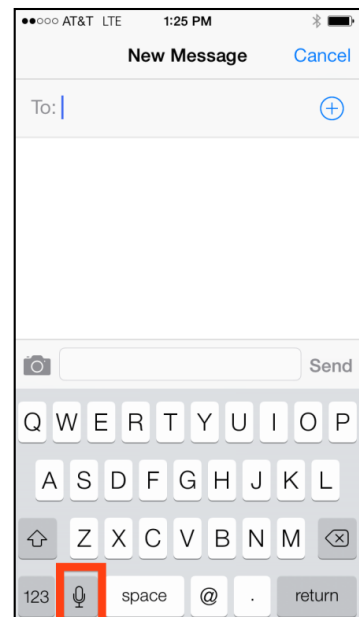
1. Settings
2. Display
3. Pulse notification light

# Accessibility Features

## Dictation

# Apple - Dictation

- Microphone icon on keyboard
- Allows you to speak:
  - Emails
  - SMS/Text messages
  - URLs for web browsing
- Only available in some applications



# Android Dictation

- Microphone icon on virtual keyboard
- Allows you to speak emails, SMS/Text messages, and URLs for web browsing
- Only available in some applications



# Accessibility Features

## Near Field Communications



# Google's Android 4.4 (KitKat)

## Near Field Communications

# Android - Near Field Communications (NFC)

- Tap two NFC-enabled devices to share:
  - Photos, Websites, Files, and Contacts
- Environmental or other access control
  - Tapping to pay at convenience stores
  - Use technology for opening doors without keys
  - Thermostat temperature adjustments

# Access Android Near Field Communications (NFC)

Steps to enable Vibrate on Ring:

1. Settings
2. More...
3. NFC

# Accessibility Features

## Additional

# Apple iOS

## Assistive Touch

# Apple - AssistiveTouch

- Adapts touchscreen to your unique needs
  - Customization of multi-touch gestures to just one tap of finger, stylus, or mouthstick
  - Accessible method for operating side keys, power, and home buttons

# Access Apple AssistiveTouch

Steps to enable AssistiveTouch:

1. Settings
2. General
3. Accessibility
4. AssistiveTouch

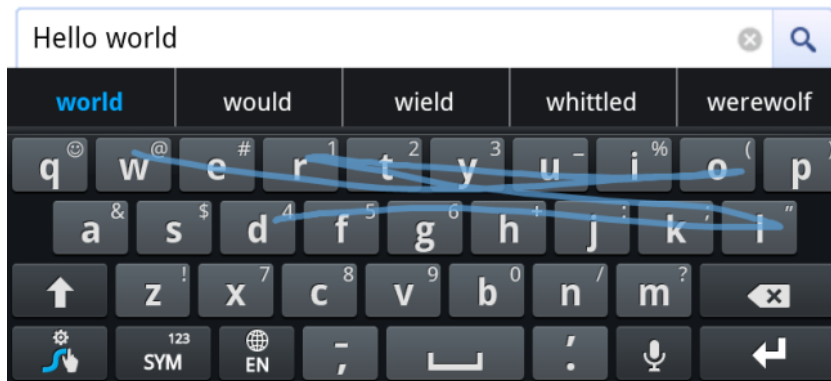
# Google's Android 4.4 (KitKat)

## SWYPE



# Android - SWYPE

- Virtual keyboard for touchscreen smartphones and tablets
  - Slide a finger or stylus from the first letter of a word to its last letter, lifting only between words, to enter text
- SWYPE supports “Talkback” and “Explore by Touch”
- Sync Voice and Text Dictionary

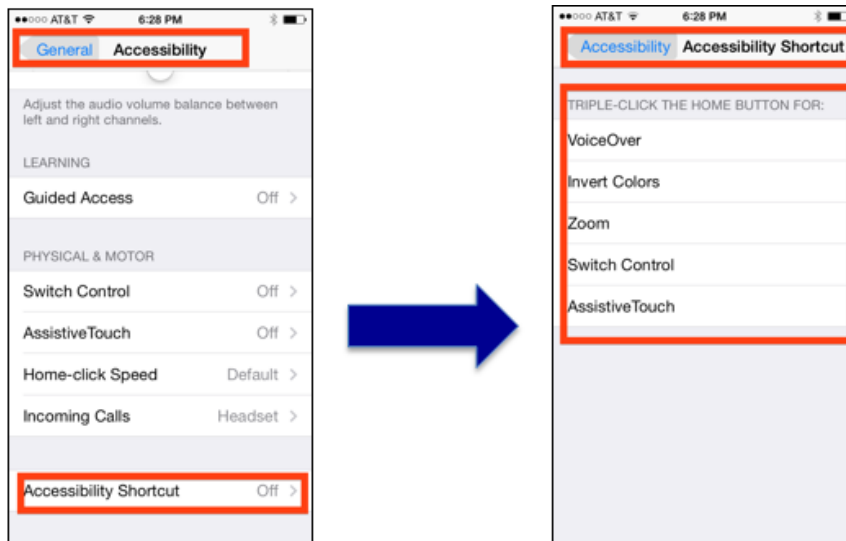


# Accessibility Features

## Accessibility Shortcut

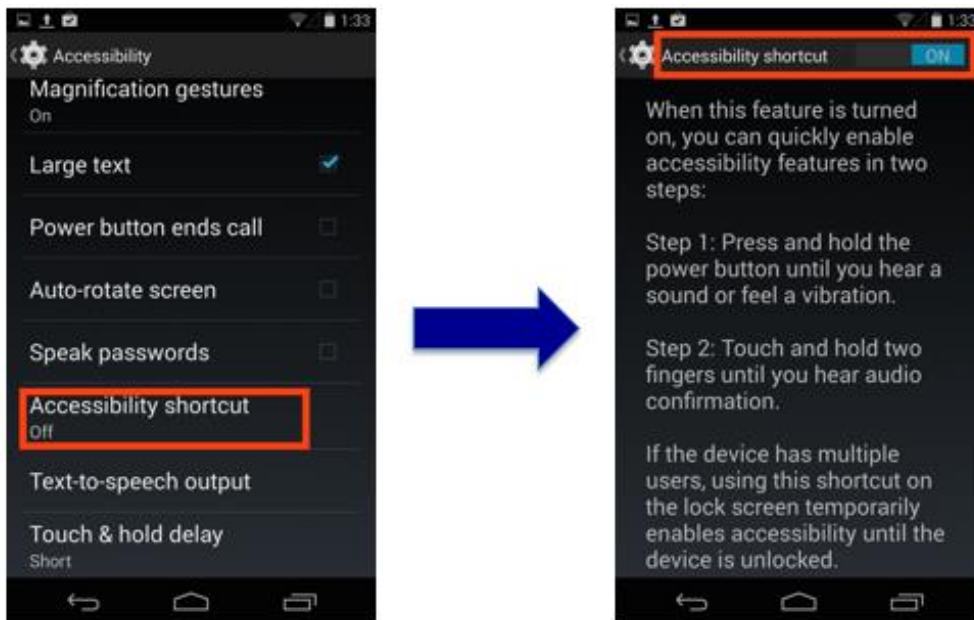
# Apple - Accessibility Shortcut

- Triple-click Home button to enable an accessibility feature:
  - VoiceOver, Invert Colors, Zoom, Switch Control, Assistive Touch



# Android - Accessibility Shortcut

- Quickly enable accessibility features



# Accessibility Resources



# Online Resources for Accessible Apps

- Each OS's app store
  - [Apple's App Store \(www.itunes.apple.com/us/genre/mobile-software-applications/id36?mt=8\)](http://www.itunes.apple.com/us/genre/mobile-software-applications/id36?mt=8)
  - [Google Play \(www.play.google.com/store\)](http://www.play.google.com/store)
  - [Windows Phone Store \(www.windowsphone.com/en-us/store/featured-apps\)](http://www.windowsphone.com/en-us/store/featured-apps)
- FCC Accessibility Clearing House
  - [FCC Accessibility Clearing House \(www.ach.fcc.gov\)](http://www.ach.fcc.gov)
- Global Accessibility Reporting Initiative (GARI)
  - [GARI \(www.gari.info\)](http://www.gari.info)

# Online Resources for Wireless Accessibility Information/Products

- AT&T National Center for Customer with Disabilities (NCCD)
  - Specialized customer service representatives can assist with questions about alternate billing format such as Braille or large print, the [Directory Assistance Exemption Program](#), and questions about AT&T equipment, accessories, features, and services.
  - Voice calls: 1-866-241-6568; TTY calls: 1-866-241-6567
- AT&T Sales and Service Center for Disability and Aging- Wireline Services
  - Specialized customer service representatives can assist with questions about alternate billing format such as Braille or large print for wireline services, the [Directory Assistance Exemption Program](#), and questions about AT&T equipment, accessories, features, and services.
  - Voice calls: 1-800-772-3140; TTY calls: 1-800-651-5111
- Wireless RERC's list of online accessibility resources
  - [Online accessibility resources \(wirelessrerc.gatech.edu/node/365\)](http://wirelessrerc.gatech.edu/node/365)
  - Provides direct links to manufacturers & service providers accessibility sites
- Global Accessibility Reporting Initiative (GARI)
  - [GARI \(www.gari.info\)](http://www.gari.info)
  - Ability to compare device accessibility features
  - Filter by dexterity, seeing, hearing and cognition

# Take the “Exit” Survey

Please tell us what you think about this event!  
We’re listening to your feedback!

[Survey Monkey](https://www.surveymonkey.com/s/Accessibility-Workshop)  
[\(\[www.surveymonkey.com/s/Accessibility-Workshop\]\(https://www.surveymonkey.com/s/Accessibility-Workshop\)\)](https://www.surveymonkey.com/s/Accessibility-Workshop)

## Final Questions?



# Contact us!

Ben Lippincott

404-894-7034

[ben@imtc.gatech.edu](mailto:ben@imtc.gatech.edu)

Kendra Cox

512-372-5947

[kendra\\_cox@labs.att.com](mailto:kendra_cox@labs.att.com)



---

The Rehabilitation Engineering Research Center for Wireless Technologies is sponsored by the National Institute on Disability and Rehabilitation Research (NIDRR) of the U.S. Department of Education under grant number H133E110002. The opinions contained in this website are those of the Wireless RERC and do not necessarily reflect those of the U.S. Department of Education or NIDRR.